

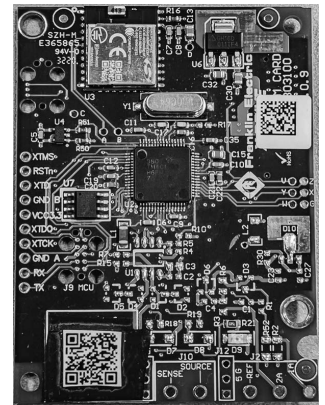
Cerus X-Drive FE Connect Communication Card

⚠ WARNING



Risk of bodily injury or damage to drive or other equipment. Contact with hazardous voltage could result in death or serious injury.

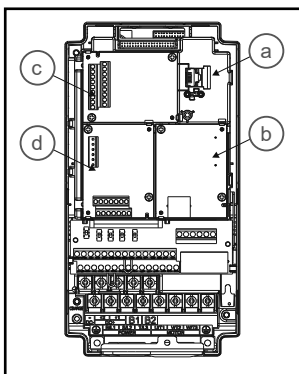
- Disconnect and lock out all power before installing or servicing equipment.
- Capacitors inside the drive can still hold lethal voltage even after power has been disconnected. ALWAYS check if DC bus charge LED is off and DC voltage on the terminals DC (+) and DC (-) is less than 30 VDC before working on VFD wiring. The DC bus capacitors may hold high-voltage charge for several minutes after the VFD power is disconnected.
- Read and follow instructions carefully to avoid injury and property damage. Do not disassemble or repair unit unless described in this manual



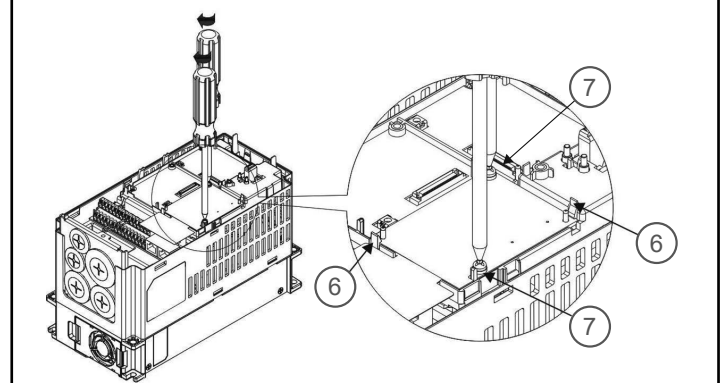
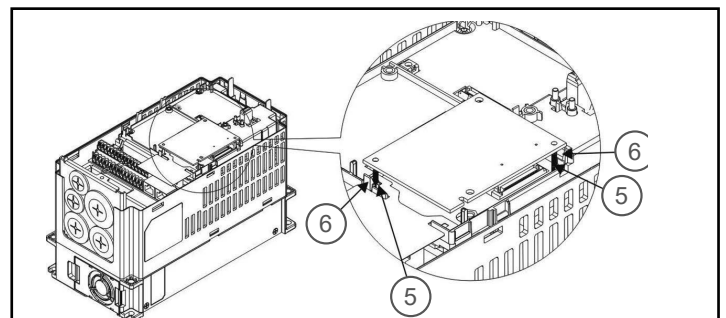
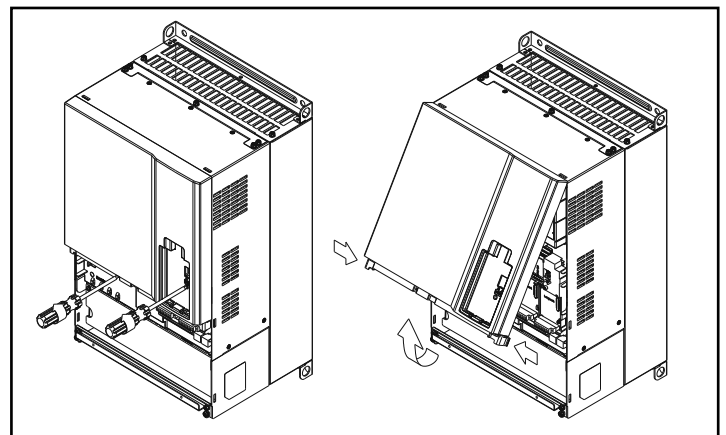
This equipment should be installed and serviced by technically qualified personnel who are familiar with the correct selection and use of appropriate tools, equipment, and procedures. Failure to comply with Franklin Electric recommendations may result in electrical shock or fire hazard, unsatisfactory performance, or equipment failure. Refer to the X-Drive Installation and Operation Manual for Additional Important Safety and Operation Information.

Communication Card Installation

1. Remove power from the drive and wait until voltage has safely discharged from the DC bus.
2. Remove the digital keypad.
3. Remove the front cover as shown. (Refer to the X-Drive Manual for additional drive frame size illustrations.)
4. Locate slot for card installation.
 - a. RJ45 socket for digital keypad.
 - b. Communications card slot (Bluetooth, Ethernet).
 - c. Input/Output extension card slot.
 - d. Not currently used.



5. Align holes in card over the positioning pins.
6. Press down on the card until retaining clips snap into place.
7. When clips are secure, install retaining screws and tighten to a torque of 6-8 kg-cm / 5.2-7 lb-in. / .59-.79 Nm.

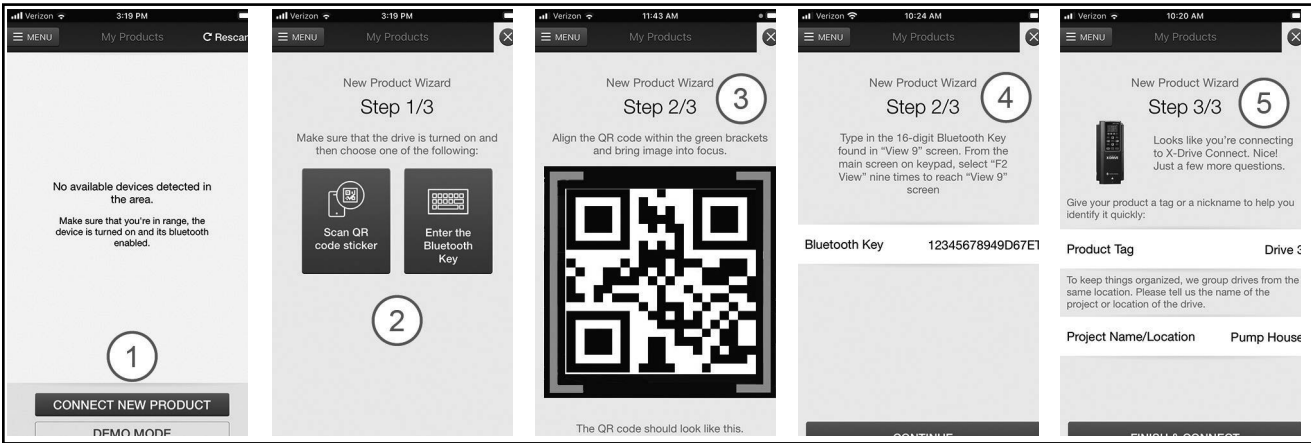


NOTICE

Risk of damage to drive or other equipment.

- Extension cards cannot be replaced with power applied. Damage to VFD may occur.
- Take protective measures against ESD (Electrostatic Discharge) before touching printed circuit boards during inspection, installation, or repair.
- This product is recommended for use with Franklin Electric X Drives. Use of this unit with other products may result in damage to accessory, motor and drive.

Connect Mobile Application to Communication Card

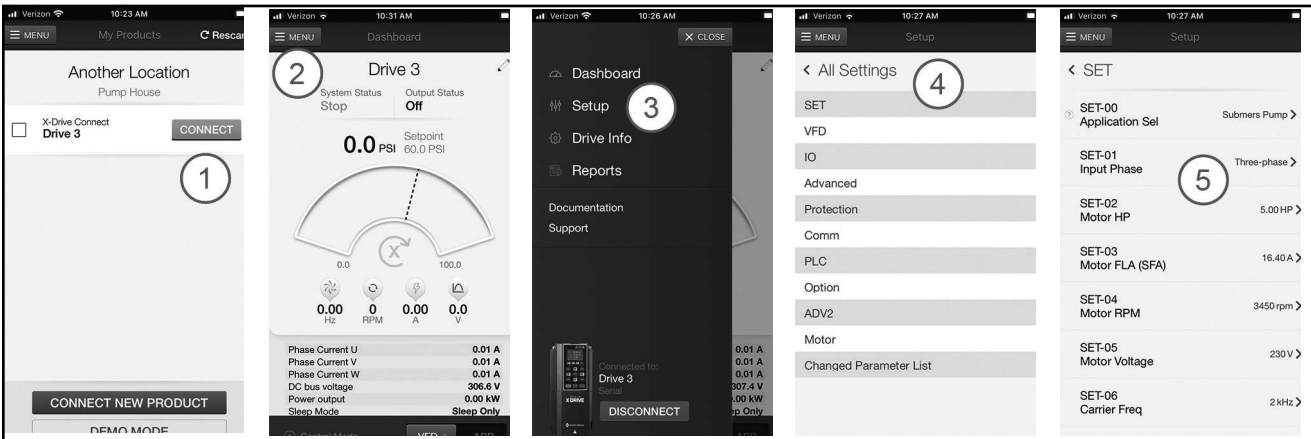


In your mobile device's app store, search for FE Connect. Locate and install the X-Drive specific version of the app. After installation, use the following procedure to connect to the communication card and the X-Drive:

1. From the Home screen, tap **Connect New Product**.
2. On the **New Product Wizard** screen, tap either **Scan QR Code Sticker** or **Enter the Bluetooth Key**.
3. If using the scanning tool, center the QR code on the Bluetooth card in the screen.
4. If using the Bluetooth key, press the **F2** button on the drive keypad repeatedly to display the **BT Card Name** screen. Enter the Key number shown into the app.
5. Enter a Name and Location to identify the drive within the app.

Tap Finish & Connect to complete the connection.

Using the Mobile Application



Use the following procedure to program an X-Drive that has been paired with the app.

1. On the My Products screen, tap the name of the desired drive to connect to the device and enter the Dashboard.
2. Tap the MENU button to for a list of options.
3. Tap Setup to change VFD settings, then tap All Settings to display the complete parameters lists.
4. From here, you will be able to program and verify all drive settings.

When setup is complete, many more features are available in the app for controlling and fine tuning performance of the X-Drive.

EMC Compliance:

CE: Bluetooth module is in conformity with the essential requirements and other relevant requirements of the Radio Equipment Directive (RED) (2014/53/EU). The specific product assembly may have an impact to RF radiated characteristics in some installations.

FCC: Bluetooth module complies with Part 15 of the FCC Rules. Operation is subject to the following two conditions:

- a. This device may not cause harmful interference, and
- b. This device must accept any interference received, including interference that may cause undesirable operation.

Additional EMC mitigation for these installations may be necessary.

Trademarks: Bluetooth is a registered trademark of Bluetooth SIG, Inc.



For technical assistance, parts, or repair, please contact:

800.348.2420 | franklin-electric.com

1000007933 Rev. 000 04/21



Franklin Electric

Copyright © 2021, Franklin Electric, Co., Inc. All rights reserved.